



# ALYA RAIL

## SPECIFICATION



Polycarbonate body



Optics: Circular Lens + Hall Lens

IP

IP20

IK

IK04

lm

170 lm - 425 lm



Duration: 1 - 3 h · Battery: LFP



Charging time: 12 h



Supply: 230 V - 50 Hz

LED

LED temperature: 4000 °K



Working temperature: 0 °C to +40 °C



AutoTest

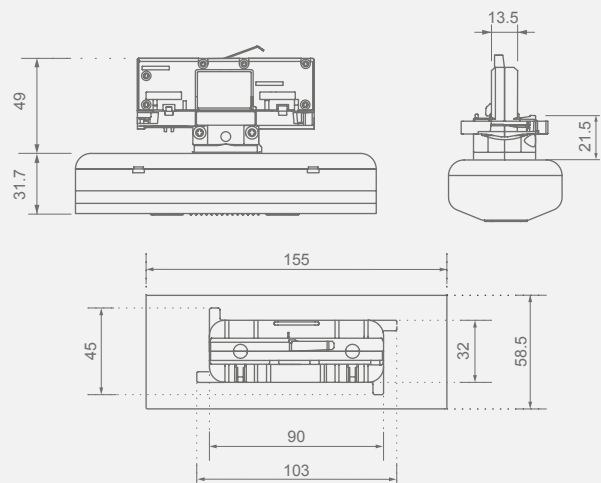


Wireless addressable monitoring



AutoTest & WSS Lithium

## DIMENSIONS (mm)



## STANDARDS COMPLIANCE

EN-60598-2-22

AutoTest: EN-62034

Wireless: ETSI EN 300 220

DALI: EN 62386

## CERTIFICATIONS



RANGE

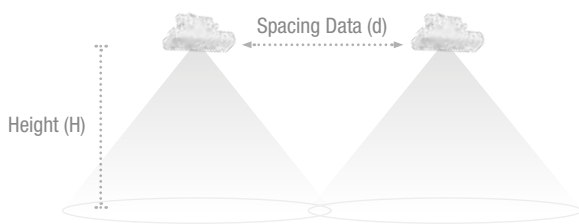
|          | Emergency | Mains  | Type* | Dur. | Battery         | Ref.         |
|----------|-----------|--------|-------|------|-----------------|--------------|
| AutoTest | 390 lm    | 235 lm | M     | 1 h  | 3.2V 1.5A/h LFP | LYA6400LXP   |
|          | 300 lm    | 180 lm | M     | 3 h  | 3.2V 3.0A/h LFP | LYA6300LXP3  |
| Wireless | 390 lm    | 235 lm | M     | 1 h  | 3.2V 1.5A/h LFP | LYA6400LDPW  |
|          | 300 lm    | 180 lm | M     | 3 h  | 3.2V 1.5A/h LFP | LYA6300LDP3W |
| DALI     | 390 lm    | 235 lm | M     | 1 h  | 3.2V 1.5A/h LFP | LYA6400LAP   |
|          | 300 lm    | 180 lm | M     | 3 h  | 3.2V 3.0A/h LFP | LYA6300LAP3  |

M: Maintained.

For version in black colour, add an 'N' at the end of the reference.

SPACING TABLE

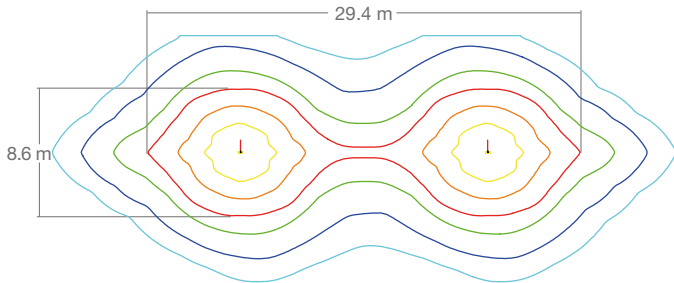
Spacing table calculated with 1 lux minimum illuminance



| Height (H) | Spacing Data (d) |        |
|------------|------------------|--------|
|            | 300 lm           | 390 lm |
| 2.5 m      | 14.8 m           | 14.8 m |
| 3 m        | 16.5 m           | 17.8 m |
| 4 m        | 16.4 m           | 19.1 m |
| 5 m        | 16.1 m           | 18.7 m |
| 6 m        | 14.0 m           | 17.9 m |

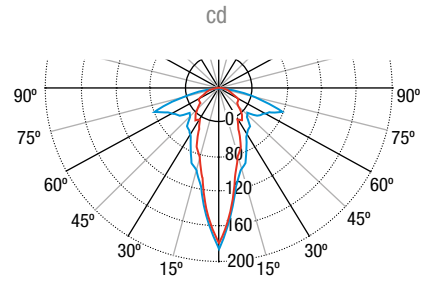
ISOLUX CURVE

390 lm luminaire placed at 3 m height



Isoline — 0.1 lx — 0.2 lx — 0.5 lx — 1.0 lx — 2.0 lx — 5.0 lx

PHOTOMETRIC GUIDE



— C0 - C180 — C90 - C270

