

SPACE

LSLX3251LW3N EV¹⁰ SmartZ[®]

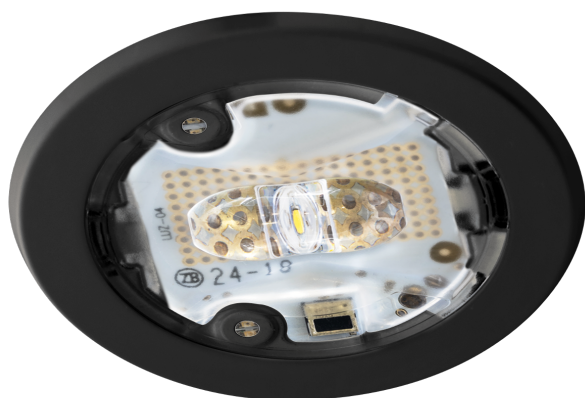
Taric 9405114090



Technical Standards

EN-60598-1, EN-60598-2-22, EN-62034, EN-303-446-1

Certifications



Functional Specifications

Mechanical and Aesthetic Specifications

	Self-Contained
	Control system: Wireless SmartZ [®]
	AutoTest: Yes
	Type: Non-maintained
	Supply: 230V 50Hz<0.6W
	Non-maintained mode consumption: 0,6 W
	Emergency: 285 lm
	Duration: 3 h Battery: 6.4V-3.0Ah LiFePO ₄
	Charging time: 12 h

	Mounting: Ceiling Recessed
	Insulation: Class II
	IP44
	IK04
	Lamp: 1 x LED 3W
	LED color temperature: 4000 K
	Body material: Recycled Polycarbonate
	Finish: Black RAL9005
	Diffuser / Optics: Polycarbonate Escape Route Lens
	Working temperature: 0 / 40 °C
	Suitable for flammable surface: Yes



SPACE LSLX3251LW3N

Installation characteristics

Luminaires made up of a spotlight + electrical equipment + batteries

Installation type:

- Recessed ceiling.

Optics designed for hallways

Double spring clips installation method.

Cables between different halogen-free elements.



Operating characteristics

EVO10 is a high-performance emergency luminaire designed for maximum efficiency and sustainability. Built with LiFePO4 (Lithium Iron) battery technology, it offers an extended lifespan, reduced power consumption and enhanced reliability. Its design minimizes material use while ensuring durability, with 99% of plastics reused and 95% of energy sourced from renewables. EVO10 undergoes five levels of quality control and integrates seamlessly with the SmartZ® management system for real-time monitoring and diagnostics, optimizing performance while reducing installation and maintenance footprint, contributing to an overall sustainability solution. Manufactured in the EU, that meets the highest industry standards and comes with a 10-year warranty, ensuring long-term operational efficiency and lower maintenance costs.

This luminaire is compatible with the SmartZ® intelligent emergency lighting management system, designed to facilitate maintenance and installation control. Thanks to its 2.4 GHz wireless communication capability, it creates a dynamic mesh network that allows the connection of more than 10,000 luminaires without the need for any additional wiring.

The system simplifies real-time monitoring by issuing automated alerts in case of potential failures, eliminating the need for any manual inspections.

Additionally, it has the facility to integrate with other systems, both wired and wireless.

If not connected to the mesh network, the luminaire will default and operate in Autotest mode, automatically performing the detailed tests listed below.

Microprocessor controlled luminaire that performs periodic and automatic tests.








Functional test every **7 days**.



Duration test every **365 days**.

The test result is shown in the status indicator LEDs.

The luminaire has status LEDs, which indicates:

- | | | |
|---|--|--|
|  Green on: correct operation |  Orange on: incorrect battery or duration |  Both leds off: no power supply or total failure of the luminaire |
|  Green flashing: test in progress |  Orange flashing: functional failure | |

Accessories



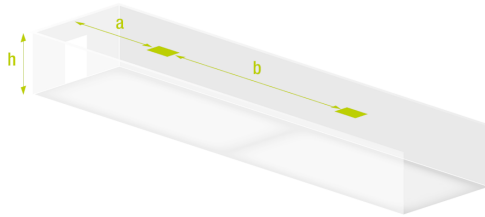
CSZ003
SMARTZ CONTROL UNIT+ UPS
CSZ002+SAI002



ACE0065N
ACC. IP65 SPACE
BLACK

SPACE LSLX3251LW3N

Spacing table



h	a	b
2 m	9,2 m	23,0 m
2.5 m	10,0 m	25,5 m
3 m	10,3 m	27,5 m
4 m	4,6 m	30,2 m
5 m	3,5 m	24,5 m

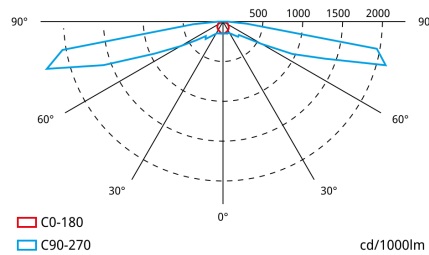
Spacing data calculated with no reflections and a maintenance factor of 0.9.

Compliant with the updated standard EN-1838:2024.

Minimum illuminance of 1 lux over a 1 m wide evacuation path.

The calculation of spacing distances is carried out considering the height of the light emission point, without taking into account the dimensions of the luminaire.

Photometric guide



Weight (kg)



Product weight:

0.28 kg

Boxed product weight:

0.31 kg

Weight of box of 15 units:

4.89 kg

Dimensions (mm)

