

ZEMPER

THE EMERGENCY LIGHTING SPECIALIST



EVOC10

Zemper's most sustainable and durable range

Sustainability is More Than Just a Buzzword for Zemper. It's Leading Our Entire Business Strategy



SUSTAINABILITY

We create reliable solutions that are respectful to the environment, promoting an inclusive society.



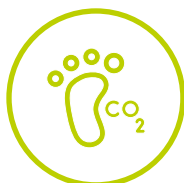
CIRCULAR ECONOMY

We contribute to an endless, circular world where waste becomes a resource and old becomes new.



RENEWABLE ENERGY

In 2024, our photovoltaic installation will reach 260 kWh. 95% of our energy consumption comes from renewable sources.



CARBON FOOTPRINT

We reduce our carbon footprint year after year and plant trees to offset it. Our objective is net zero by 2030.



RECYCLING

Each of our luminaires is at least 60% recyclable. We use 100% recycled and recyclable packaging.



Zemper Sustainability

Our Sustainability Certificates

A leading company in sustainability and environmental commitment



The world's most trusted provider of business sustainability ratings.



EN 60598-2-22

Certification issued by an independent body, that it is a tool for recognising the ecological quality of a product.



All Zemper products have been designed and manufactured in Spain.



EN 60598-2-22 + Sustainable Aenor Protocol

Certifies that in addition to complying with the requirements of the brand N (which is equal to ENEC) meets the strictest requirements of sustainability during its manufacture.



IQNet SR10

Gathers the best international practices and recommendations regarding social responsibility.



GHG Protocol

The total company amount of greenhouse gas emissions (GHG) that are generated from the manufacturing to the sale of the products.



ISO 14001

Assures that Zemper measures and reduces its environmental impacts and complies with environmental legislation.



ISO 9001

Ensure that Zemper's customers get consistently good quality products and services.



ISO 45001

Specifies requirements for an occupational health and safety (OH&S) management system.

AENOR: Reference certification body for systems and products in Spain.

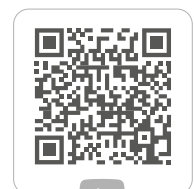
EVO10

Our core luminaire product range has been expanded to include premium and more sustainable options.

We have reduced our carbon footprint, using fewer materials, less energy, and more efficient transportation and manufacturing methods.

Durable design ensures minimal waste over an extended period.

Our primary objectives are longevity, efficiency, and reusability.



EVO 10

Ecodesign

Zemper considers the environment throughout the product design and development process. The EVO-10 range has the lowest environmental impact across its product life cycle.

We have reduced the size of plastics, PCBs and electronic components.

We monitor our environmental footprint
(Zemper is a Sustainable AENOR N brand).

We carry out a certificated study of energy consumption and end-of-life
(NF Environment).



Sustainable Manufacturing



Latest-generation, low-consumption SMD and plastic production lines.

Use of recyclable plastics

Using recycled and recyclable polycarbonate contributes less to global warming, depletion of resources, and pollution.

Lens efficiency

Lens development at Zemper has resulted in optimized performance.

Better lenses allow optimal luminaire spacing and uniformity.

Higher lens efficiency means fewer luminaires are required.

Renewable energy

In 2024, our photovoltaic installation will reach 260 kWh.

95% of our energy consumption comes from renewable resources.

Minimum environmental impact

Net-zero objective for 2030.

Long-Lasting Components



Endurance is nothing new for us. There are 30-year-old Zemper luminaires still working correctly today, which only require battery maintenance.

LEDs guaranteed for 100 000 hours.

Tested with thermal cameras to detect critical points, extending the life of the electronic components.



Largest Battery Study in the World

In collaboration with experts from the IMDEA Institute, Zemper has conducted the largest-ever study of LiFePO_4 batteries in an emergency lighting application, including ideal operating temperatures.

Years of analysis and research have gone into designing long-lasting luminaires.

The development of microprocessor-controlled hardware and software to manage the load of LiFePO_4 batteries has optimized battery lifetime.



Low Consumption

We have developed our own charging system for LiFePO_4 batteries, which optimizes energy consumption while extending the lifetime of our batteries.

Improved luminous efficiency.

SmartZ[®] and DALI-2 monitoring system:
Reduced maintenance, easier management, safer buildings.

- Reduction of installation and maintenance footprint.
- Preventive maintenance.
- Battery status display.



- Simple, fast installation and maintenance ensure fewer people required on-site, lower energy consumption and less transport pollution.

Traceability and Quality Controls

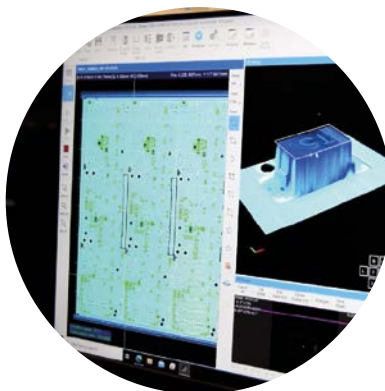
Five levels of quality control during production.
100% controlled luminaires.

PCBs control via AOI.

Traceability via laser marking (more sustainable than labelling).

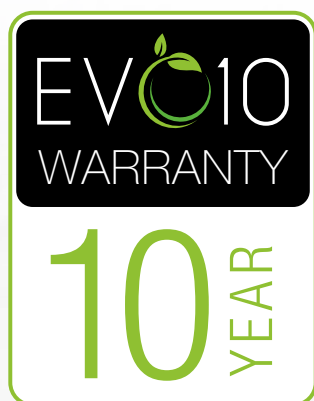
Traceability from components to the final product.

Recyclability.



Zemper conducts **extreme quality controls on all its products** and components at all phases, from design to final production.

For all these reasons, the way we design,
the way we produce, the components we use, the tests we make:
we can ensure EVO-10 will last 10 years.



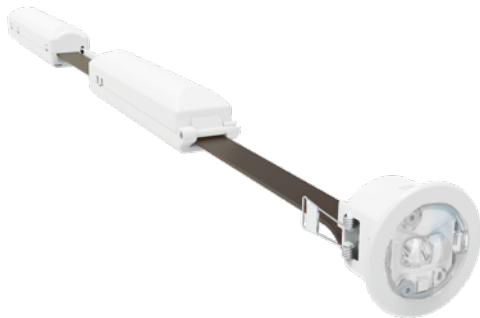
The Zemper EVO-10 product warranty offered to
customers covers a period of 10 years.
Please consult our General Conditions of Guarantee.

EVO10

RANGE

SPACE

SmartZ



Wireless SmartZ®

Emergency	Dur.	Battery	Lens	Part number
250 lm	1 h	6.4V 1.5A/h LiFePo ₄	Corridor	LSLX3251LA
290 lm	1 h	6.4V 1.5A/h LiFePo ₄	Area	LSLX3300LA
420 lm	1 h	6.4V 1.5A/h LiFePo ₄	Narrow	LSLX3404LA
420 lm	1 h	6.4V 1.5A/h LiFePo ₄	Corner	LSLX3403LA
440 lm	1 h	6.4V 1.5A/h LiFePo ₄	Corridor+	LSLX3402LA
470 lm	1 h	6.4V 1.5A/h LiFePo ₄	Area	LSLX3500LA
250 lm	3 h	6.4V 3.0A/h LiFePo ₄	Corridor	LSLX3251LA3
290 lm	3 h	6.4V 3.0A/h LiFePo ₄	Area	LSLX3300LA3
400 lm	3 h	6.4V 4.0A/h LiFePo ₄	Corner	LSLX3403LA3
400 lm	3 h	6.4V 4.0A/h LiFePo ₄	Narrow	LSLX3404LA3
420 lm	3 h	6.4V 4.0A/h LiFePo ₄	Corridor+	LSLX3402LA3
450 lm	3 h	6.4V 4.0A/h LiFePo ₄	Area	LSLX3500LA3
250 lm	1 h	6.4V 1.5A/h LiFePo ₄	Corridor	LSLX3251LW
290 lm	1 h	6.4V 1.5A/h LiFePo ₄	Area	LSLX3300LW
420 lm	1 h	6.4V 1.5A/h LiFePo ₄	Narrow	LSLX3404LW
420 lm	1 h	6.4V 1.5A/h LiFePo ₄	Corner	LSLX3403LW
440 lm	1 h	6.4V 1.5A/h LiFePo ₄	Corridor+	LSLX3402LW
470 lm	1 h	6.4V 1.5A/h LiFePo ₄	Area	LSLX3500LW
250 lm	3 h	6.4V 3.0A/h LiFePo ₄	Corridor	LSLX3251LW3
290 lm	3 h	6.4V 3.0A/h LiFePo ₄	Area	LSLX3300LW3
400 lm	3 h	6.4V 4.0A/h LiFePo ₄	Corner	LSLX3403LW3
400 lm	3 h	6.4V 4.0A/h LiFePo ₄	Narrow	LSLX3404LW3
420 lm	3 h	6.4V 4.0A/h LiFePo ₄	Corridor+	LSLX3402LW3
450 lm	3 h	6.4V 4.0A/h LiFePo ₄	Area	LSLX3500LW3

Non Maintained



SPAZIO LUZ 10

	Emergency	Dur.	Battery	Part number
	400 lm	1 h	3.2V 1.5A/h LiFePo ₄	LUZX4400LA
	120 lm	3 h	3.2V 1.8A/h LiFePo ₄	LUZX4150LA3
Wireless SmartZ®	400 lm	1 h	3.2V 1.5A/h LiFePo ₄	LUZX4400LW
	120 lm	3 h	3.2V 1.8A/h LiFePo ₄	LUZX4150LW3

For black version, add "N" at the end of the part number.

Non Maintained



SPAZIO ON 10

	Emergency	Dur.	Battery	Part number
	250 lm	1 h	3.2V 1.5Ah LiFePo ₄	LSMX3250LA
	250 lm	1 h	3.2V 1.5Ah LiFePo ₄	LSMX3250LAN
	250 lm	1 h	3.2V 1.5Ah LiFePo ₄	LSMX3251LA
	250 lm	1 h	3.2V 1.5Ah LiFePo ₄	LSMX3251LAN
	250 lm	1 h	3.2V 1.5Ah LiFePo ₄	LSMX3252LA
	250 lm	1 h	3.2V 1.5Ah LiFePo ₄	LSMX3252LAN
	95 lm	3 h	3.2V 1.5Ah LiFePo ₄	LSMX3100LA3
	95 lm	3 h	3.2V 1.8Ah LiFePo ₄	LSMX3101LA3
	95 lm	3 h	3.2V 1.8Ah LiFePo ₄	LSMX3102LA3
Wireless SmartZ®	250 lm	1 h	3.2V 1.5Ah LiFePo ₄	LSMX3250LW
	250 lm	1 h	3.2V 1.5Ah LiFePo ₄	LSMX3250LWN
	250 lm	1 h	3.2V 1.5Ah LiFePo ₄	LSMX3251LW
	250 lm	1 h	3.2V 1.5Ah LiFePo ₄	LSMX3251LWN
	250 lm	1 h	3.2V 1.5Ah LiFePo ₄	LSMX3252LW
	250 lm	1 h	3.2V 1.5Ah LiFePo ₄	LSMX3252LWN
	95 lm	3 h	3.2V 1.8Ah LiFePo ₄	LSMX3100LW3
	95 lm	3 h	3.2V 1.8Ah LiFePo ₄	LSMX3101LW3
	95 lm	3 h	3.2V 1.8Ah LiFePo ₄	LSMX3102LW3

For black version, add "N" at the end of the part number.

Non Maintained



ALYA MAXI 10

	Emergency	Dur.	Battery	Part number
	390 lm	1 h	3.2V 1.5A/h LiFePo ₄	LYAX5400LA
	175 lm	3 h	3.2V 3.0A/h LiFePo ₄	LYAX5170LA3
Wireless SmartZ®	390 lm	1 h	3.2V 1.5A/h LiFePo ₄	LYAX5400LW
	175 lm	3 h	3.2V 3.0A/h LiFePo ₄	LYAX5170LW3

For black version, add "N" at the end of the part number.

Luminous flux decreases by 18% in black colour version.

Non Maintained



WALYA MAXI 10

	Emergency	Dur.	Battery	Part number
	285 lm	1 h	3.2V 1.5A/h LiFePo ₄	LYWX5300LA
	95 lm	3 h	3.2V 1.5A/h LiFePo ₄	LYWX5100LA3
Wireless SmartZ®	285 lm	1 h	3.2V 1.5A/h LiFePo ₄	LYWX5300LW
	95 lm	3 h	3.2V 1.5A/h LiFePo ₄	LYWX5100LW3

For black version, add "N" at the end of the part number.

Luminous flux decreases by 18% in black colour version.

Non Maintained



EXITALYA MAXI 10
SURFACE

	Emergency	Dur.	Battery	Part number
	--	1 h	3.2V 1.5A/h LiFePo ₄	LYEX5070LAP
	--	3 h	3.2V 3.0A/h LiFePo ₄	LYEX5070LAP3
Wireless SmartZ®	--	1 h	3.2V 1.5A/h LiFePo ₄	LYEX5070LWP
	--	3 h	3.2V 3.0A/h LiFePo ₄	LYEX5070LWP3

For version in black colour, add an 'N' at the end of the part number.
Maintained



EXITALYA MAXI 10
SURFACE DOWNLIGHT

	Emergency	Dur.	Battery	Part number
	45 lm	1 h	3.2V 1.5A/h LiFePo ₄	LYEX5120LAP
	65 lm	3 h	3.2V 3.0A/h LiFePo ₄	LYEX5120LAP3
Wireless SmartZ®	45 lm	1 h	3.2V 1.5A/h LiFePo ₄	LYEX5120LWP
	65 lm	3 h	3.2V 3.0A/h LiFePo ₄	LYEX5120LWP3

For black version, add "N" at the end of the part number.
Luminous flux decreases by 18% in black colour version.

Maintained



EXITALYA MAXI 10
RECESSED

	Emergency	Dur.	Battery	Part number
	--	1 h	3.2V 1.5A/h LiFePo ₄	LYRX5070LAP
	--	3 h	3.2V 3.0A/h LiFePo ₄	LYRX5070LAP3
Wireless SmartZ®	--	1 h	3.2V 1.5A/h LiFePo ₄	LYRX5070LWP
	--	3 h	3.2V 3.0A/h LiFePo ₄	LYRX5070LWP3

For black version, add "N" at the end of the part number.
Luminous flux decreases by 18% in black colour version.

Maintained



EXITALYA MAXI 10
RED


	Emergency	Dur.	Battery	Part number
	45 lm	1 h	3.2V 1.5A/h LiFePo ₄	LYEX5125LAP
	65 lm	3 h	3.2V 3.0A/h LiFePo ₄	LYEX5125LAP3
Wireless SmartZ®	45 lm	1 h	3.2V 1.5A/h LiFePo ₄	LYEX5125LWP
	65 lm	3 h	3.2V 3.0A/h LiFePo ₄	LYEX5125LWP3

For black version, add "N" at the end of the part number.
Luminous flux decreases by 18% in black colour version.

Maintained



DIANA 10

	Emergency	Dur.	Battery	Part number
	400 lm	1 h	3.2V 1.8Ah LiFePo ₄	LDFX9400LA
	700 lm	1 h	6.4V 1.5Ah LiFePo ₄	LDFX9700LA
	240 lm	3 h	3.2V 3.0Ah LiFePo ₄	LDFX9230LA3
Wireless SmartZ®	400 lm	1 h	3.2V 1.8Ah LiFePo ₄	LDFX9400LW
	700 lm	1 h	6.4V 1.5Ah LiFePo ₄	LDFX9700LW
	240 lm	3 h	3.2V 3.0Ah LiFePo ₄	LDFX9230LW3

For version in black colour, add an 'N' at the end of the part number.
Non Maintained



DIANA IP66 10

	Emergency	Dur.	Battery	Part number
	400 lm	1 h	3.2V 1.8Ah LiFePo ₄	LXEX9400LA
	720 lm	1 h	6.4V 1.5Ah LiFePo ₄	LXEX9700LA
	250 lm	3 h	3.2V 3.0Ah LiFePo ₄	LXEX9230LA3
Wireless SmartZ®	400 lm	1 h	3.2V 1.8Ah LiFePo ₄	LXEX9400LW
	720 lm	1 h	6.4V 1.5Ah LiFePo ₄	LXEX9700LW
	250 lm	3 h	3.2V 3.0Ah LiFePo ₄	LXEX9230LW3

Non Maintained



ARIAN 10

	Emergency	Dur.	Battery	Part number
	450 lm	1 h	3.2V 1.8Ah LiFePo ₄	LAEX9500LA
	1 000 lm	1 h	6.4V 3.0Ah LiFePo ₄	LAEX9990LA
	230 lm	3 h	3.2V 3.0Ah LiFePo ₄	LAEX9230LA3
Wireless SmartZ®	450 lm	1 h	3.2V 1.8Ah LiFePo ₄	LAEX9500LW
	1 000 lm	1 h	6.4V 3.0Ah LiFePo ₄	LAEX9990LW
	230 lm	3 h	3.2V 3.0Ah LiFePo ₄	LAEX9230LW3

Non Maintained

Why EV¹⁰



Building a more sustainable world.



Less CO₂

Contributing to an endless, circular world.



Less customer cost

Less customer maintenance costs, less repair work and less need to replace products.



Most reliable solution for saving lives

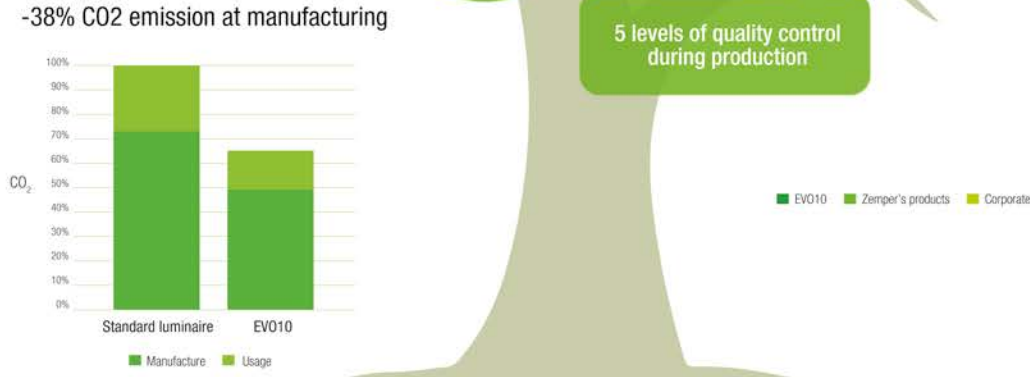
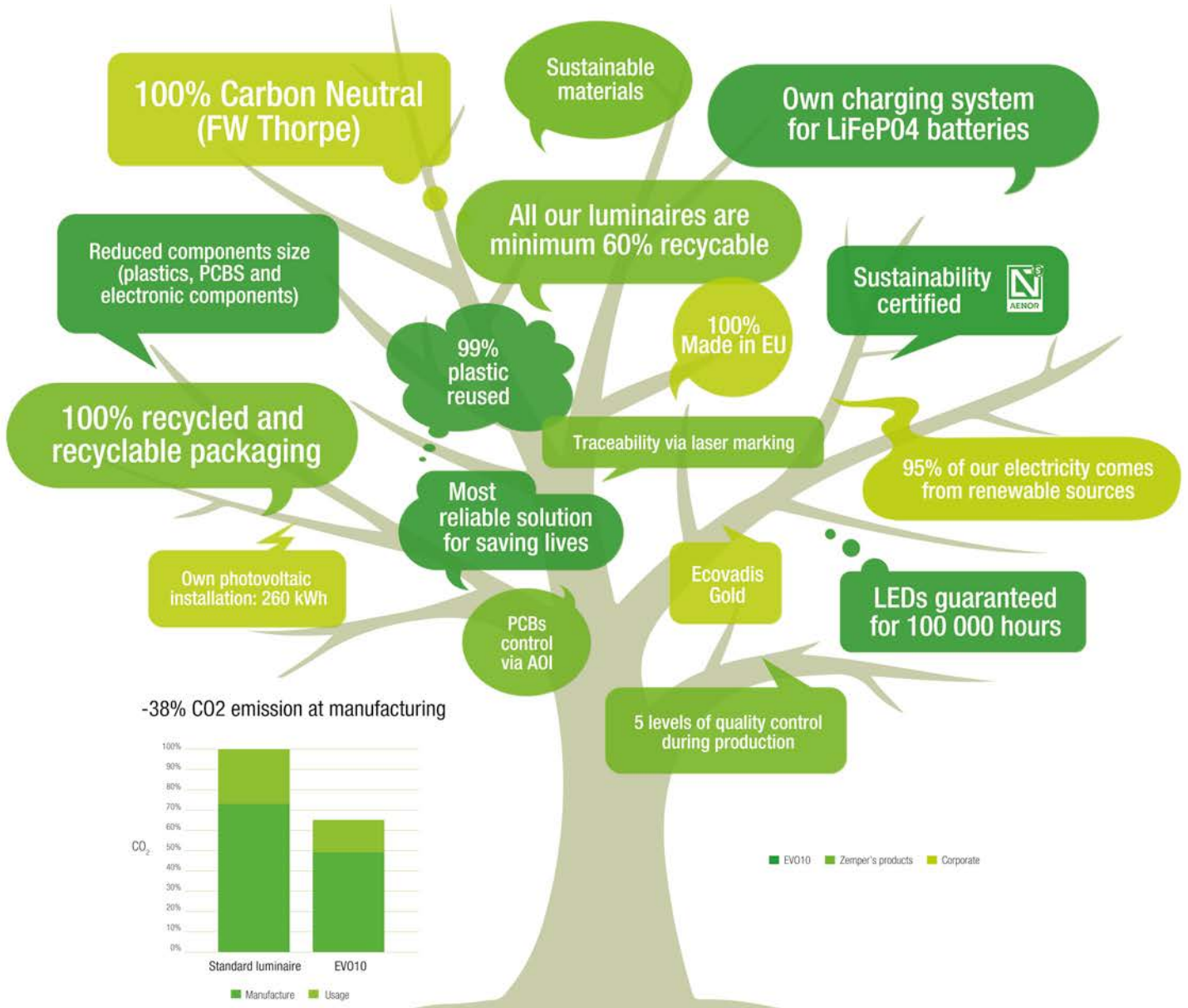
Best performing emergency lighting range in the world.
Premium components.



**The Zemper Way
to a Better World**

Leading in Sustainability and Durability

ZEMPER





Entirely designed and
manufactured in **Spain**



The Zemper Way to a Better World

We use recycled paper in the production of our catalogues, thus contributing to the conservation of forests and biodiversity. This paper requires up to 50% less energy and 90% less water, which significantly reduces environmental impact, reduces carbon dioxide emissions and promotes the circular economy. The ink we use is free of mineral oils, cobalt salts and VOCs (volatile organic compounds) so we contribute to limiting the environmental impact. We make more sustainable decisions and help protect our planet.

CEV-EN00-0724-01

ZEMPER

THE EMERGENCY LIGHTING SPECIALIST

Zemper Spain

Avda. de la Ciencia, 3 · Pol. Industrial Avanzado
13005 Ciudad Real (Spain)
Tel. +34 **926 271 837** · export@zemper.com

Zemper BeLux

Baronstraat 122
8870 IZEGEM · Bélgica
Tel. +32 51 800 210
belux@zemper.com

Zemper France

ZA des Berthilliers
189 Chemin des Frozières
71850 Charnay-lès-Mâcon · Francia
Tel. +33 3 85 34 66 20
commercial@zemperfrance.com

Zemper UK

Thornhill House, Thornhill Road,
Solihull, B91 2HB
Tel. +44 (0)121 703 2867
hello@zemper.co.uk

Commercial Offices

Marruecos
marruc@zemper.com
Colombia
export@zemper.com

www.zemper.com