



150 lm Emergency



300 - 600 lm Emergency

DIANA FLAT

SPECIFICATION

Wall	Surface	✓
	Semi recessed	✓
Ceiling	Surface	✓
	Recessed	✓

Polycarbonate body

Diffuser: Transparent Polycarbonate

IP42

IK07

150 lm - 600 lm

Duration: 3 h · Battery: LiFePO₄

Charging time: 12 h

Supply: 230 V - 50 Hz

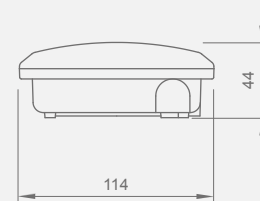
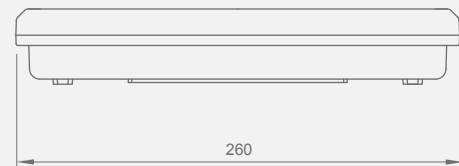
LED temperature: 4000 °K

Working temperature: 0 °C to +40 °C

AutoTest



DIMENSIONS (mm)



STANDARDS COMPLIANCE

EN-60598-2-22
AutoTest: EN-62034
DALI: EN 62386

CERTIFICATIONS



RANGE

	Emergency	Mains	Type*	Dur.	Battery	Part Number
AutoTest	150 lm		NM	3 h	3.2V 1.5A/h LiFePO ₄	LDF9150LX3
	150 lm	90 lm	M/NM	3 h	3.2V 1.5A/h LiFePO ₄	LDF9150LXP3
	300 lm	180 lm	M/NM	3 h	3.2V 3.0A/h LiFePO ₄	LDF9250LXP3
DALI	150 lm	90 lm	M/NM	3 h	3.2V 1.5A/h LiFePO ₄	LDF9150LAP3
	300 lm	180 lm	M/NM	3 h	6.4V 1.5A/h LiFePO ₄	LDF9250LAP3
	600 lm	360 lm	M/NM	3 h	6.4V 3.0A/h LiFePO ₄	LDS9600LAP3

*NM: Non Maintained. The luminaire operates from emergency supply only upon failure of the normal mains supply.

*M/NM: Maintained/Non Maintained. With a switch which allows to select Maintained or Non Maintained mode function.

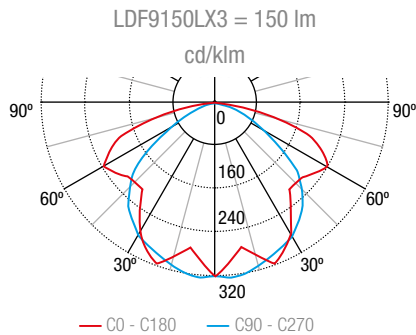
For version in black colour, add an 'N' at the end of the part number.

SPACING TABLE

LDF9150LX3 = 150 lm

Mounting Height	0.5 lux				1 lux			
	⌘↔⌘	⌘↔⌘	⌘↔⌘	⌘↔⌘	⌘↔⌘	⌘↔⌘	⌘↔⌘	⌘↔⌘
2.0 m	4.54 m	11.27 m	7.87 m	3.36 m	3.60 m	9.14 m	6.72 m	2.86 m
2.5 m	4.85 m	12.34 m	8.86 m	3.80 m	3.62 m	9.84 m	7.61 m	3.17 m
3 m	5.04 m	13.15 m	9.83 m	4.17 m	3.45 m	10.34 m	8.34 m	3.37 m
3.5 m	5.01 m	13.75 m	10.70 m	4.46 m	3.27 m	10.27 m	8.95 m	3.44 m
4 m	4.86 m	14.24 m	11.46 m	4.68 m	3.16 m	9.94 m	9.42 m	3.44 m
4.5 m	4.74 m	14.38 m	12.13 m	4.79 m	3.13 m	9.59 m	9.63 m	3.34 m

PHOTOMETRIC GUIDE



DIANA FLAT

ZEMPER

ACCESSORIES



CDD008
Opal diffuser (-20% lumen output)



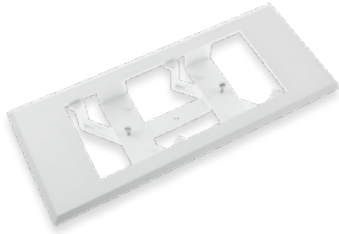
AED0071
Accessories for wall semi-recessed mounted (white colour)



AGV120
Protective Grille



AIF001
Slope accessory
47° Flat



AMU8001
Universal frame for holes with 8W to Diana/Xena



AMD0051
Accessories for wall recessed mounted (white colour)



AKF001
IK10 accessory
Diana Flat



KEYC
Cylindrical housing IP65



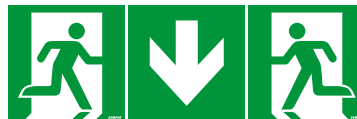
APE0065
IP66 weatherproof kit



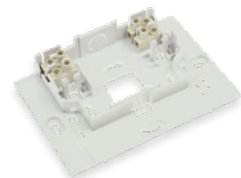
APE144
IP44 weatherproof kit, specially indicated for parking areas



90091NMF
Accessories for ceiling recessed mounted (white colour) + transparent panel D6 (without digital printing)



APT316
Modular self-adhesive pictogram set with 4 arrows



YPD0030
Diana connection mounting plate

Set of pictographs (not included)



APV616

APV617

APV618

APV619